



## **Montana Housing Coalition**

The Montana Housing Coalition (MHC) is excited to provide its members and supporters with this toolkit in order to impact policymakers and the policymaking process to enact legislation that improves housing affordability and access in communities across Montana.

This toolkit will make you, the grassroots activist, more effective and help assist MHC to achieve its legislative goals. Your help greatly enhances MHC's effectiveness as an advocate for housing affordability and access. We appreciate your willingness to partner with us.

### **All Politics Is Local**

Longtime Speaker of the House Tip O'Neill once said, "All politics is local." In a representative democracy like ours, policymakers have a duty to listen to and carry out, within the confines of our national and state constitutions, the interests of their constituents.

But if a particular group of constituents is silent, then a policymaker can't be held accountable for failing to help that particular group. That's why it's so important for interest groups and their activists to engage legislators on their issues, early and often.

This toolkit is designed to help affordable housing advocates do just that.

## Know the Legislative Process

Although the legislative process is complex, the basics can be summarized. Essentially, a legislator must request that a bill be drafted. Once it's drafted, it's introduced in the House or Senate. Let's say the bill starts in the House. From there, it is scheduled for a hearing in a House committee. The committee takes testimony from proponents, opponents, and informational witnesses. After the hearing, legislators on the committee discuss the legislation and can ask questions of anyone who testified. Once the chair of the committee feels that they have enough information on the legislation, they vote on it, which is called taking executive action. If it passes in the House committee, it then gets scheduled for action on the House floor. If it passes there, the bill is transmitted to the Senate and the same process starts over again. If the Senate committee and the Senate floor votes to pass the bill, it then goes on to the Governor for his signature.

You can access legislation on the Legislature's LAWS database at [www.tinyurl.com/LAWSdatabase](http://www.tinyurl.com/LAWSdatabase).

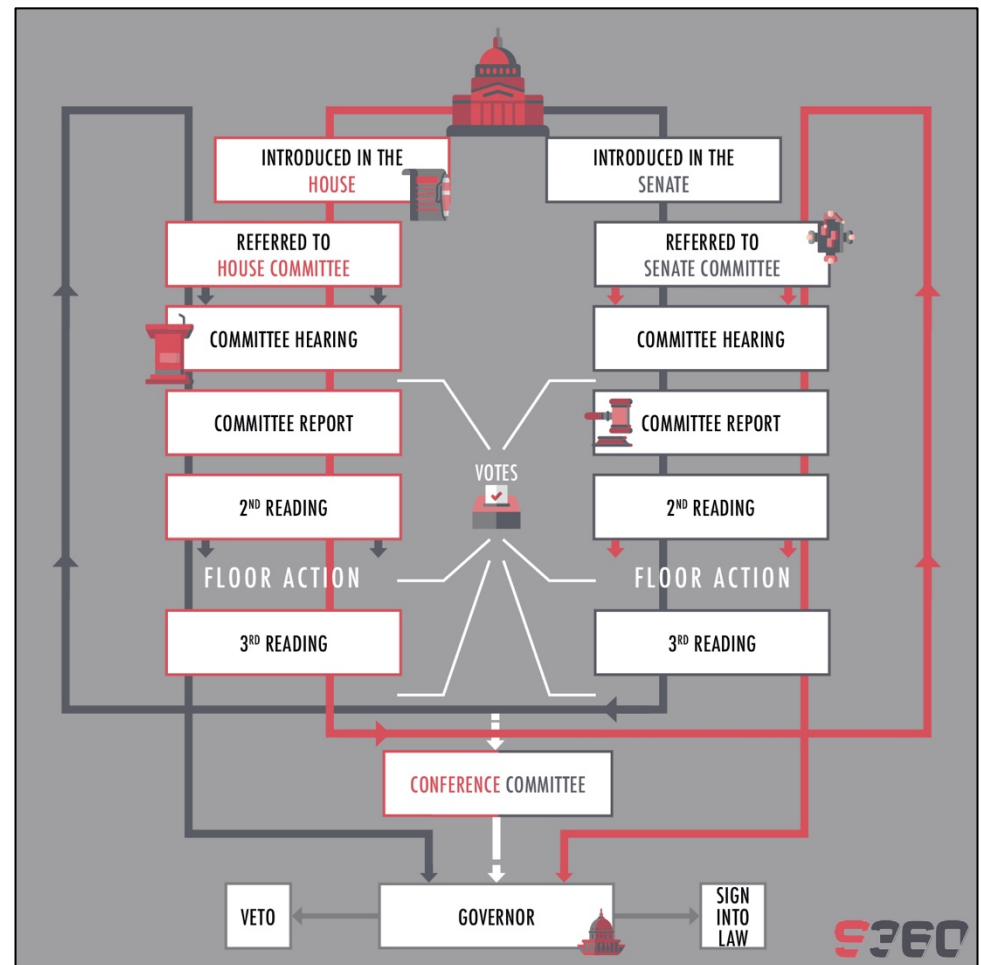
Here's a more detailed 23-step description that provides a narrative detail of how a bill becomes law in the Montana Legislature:

**Step 1.** Introduction. Bill is filed for introduction with Secretary of Senate or Chief Clerk of House.

**Step 2.** First reading. Bill's title is posted, and bill is ordered printed on white paper.

**Step 3.** Committee reference. Bill is referred to proper committee by Senate President or House Speaker. Referral is posted.

**Step 4.** Committee consideration. Committee holds public hearing on bill, then discusses it. May vote to amend bill.



**Step 5.** Committee report. Committee reports its recommendation that bill “do pass”, “do pass as amended”, or “do not pass”.

**Step 6.** Placed on calendar. Simple “do pass” and “do not pass” reports are printed as such in journal. Text of amendments reported by committee is printed in full. Bills receiving favorable reports are printed on yellow paper in first house (tan paper in second house), incorporating any reported amendments, and are placed on calendar for second reading. Bills with “do not pass” reports are not placed on second-reading calendar unless a motion is made to that effect and passed. If “do not pass” report is adopted, bill drops out of further consideration.

**Step 7.** Second reading. Entire body debates bill as “Committee of the Whole”. Amendments may be offered and voted on. Bill defeated here drops out of further consideration.

**Step 8.** Placed on third-reading calendar. Bill approved by Committee of the Whole is ordered printed on blue paper in first house (salmon paper in second house), incorporating all amendments made up to that point. (This is known as an “engrossed” bill.)

**Step 9.** Third reading. Bill subjected to simple “yes” or “no” vote by entire body, in which (by constitutional requirement) each member’s vote must be recorded and printed in journal. No amendments may be considered. Bill defeated here drops out of further consideration.

**Step 10.** Transmittal to other house. Same as Step 1 introduction, except other house works with blue copy.

**Step 11.** First reading. Summary of title and history is posted.

**Step 12.** Committee reference. See Step 3.

**Step 13.** Committee consideration. See Step 4.

**Step 14.** Committee report. Second-house committee phrases a favorable report as “be concurred in” or “be concurred in, as amended”. Unfavorable report is “be not concurred in”.

**Step 15.** Placed on calendar. Same as Step 6, except that instead of a yellow-paper copy, bill is prepared for second reading with committee amendments to blue copy included in bill and printed on tan paper. Bill with unfavorable report is not placed on calendar unless committee recommendation is reversed by full body.

**Step 16.** Second reading. Same as Step 7.

**Step 17.** Placed on third-reading calendar. Same as Step 8, except reference bill is reprinted on salmon-colored paper and includes all amendments made in second house.

**Step 18.** Third reading. Same as Step 9.

**Step 19.** Bill passed by both houses in identical form. Enrolled and sent to Governor.

**Step 20.** Bill passed by both houses in differing forms:

Second house returns bill to house of origin approved with amendments, sent with message requesting concurrence in amendments.

Question is voted in Committee of the Whole, e.g., "Shall the (Senate) amendments to (House) Bill No. \_\_\_\_ be concurred in?" If vote in house of origin is in favor of concurrence, bill is enrolled.

If a motion is made and adopted that amendments not be concurred in, originating house will usually request a conference committee (or it may send a message to second house asking it to recede from its amendments). If a conference is sought, a motion is made to authorize Senate President or House Speaker to appoint a conference committee (regular or free) to meet with a like committee from other house to resolve differences. (Regular conference committees may consider only disputed amendments; free conference committees may revise any part of bill.) This action, if approved, is communicated to second house in a message, and second house then appoints a conference committee in same manner.

**Step 21.** Conference committee reports. If conferees settle differences, each contingent reports to its parent body that bill be further amended in some fashion or that one house recede from amendments and that bill then be approved. Amendments adopted by conference committees are printed on green (House) or pink (Senate) paper. Adoption of conference committee report means house approves bill as conferees recommend.

If conferees cannot settle differences, they report their disagreement and either body may ask that a new conference committee be appointed.

**Step 22.** Enrolling. Bill is checked for accuracy and printed. Correctly enrolled bill is delivered to presiding officer of house in which bill originated. After being signed and recorded in journal, bill is transmitted to other house where same procedure is followed.

**Step 23.** Governor's desk. Governor either signs or vetoes bill or allows it to become law without his or her signature. Legislature may vote to override a veto if it has not adjourned. (Refer to Montana Constitution, Article VI, Section 10.)

## **Know Your Issues**

MHC's priority agenda includes two bills for the 2021 Legislative Session. One will ask for additional funding from the coal trust for the Coal Trust Housing Loan Fund established by House Bill 16 enacted in the 2019 Session. Additionally, MHC will seek to establish a state workforce housing tax credit to augment the federal Low Income Housing Tax Credit program, which was attempted with Senate Bill 18 in the 2019 Session.

To educate you on the two proposals, we include issue briefs and talking points for each legislative proposal in the appendix.

## **Participate in the Legislative Process**

### **Sign up as a Key Contact**

The MHC is starting a new program for its members and allies to better influence decision makers. It's called the Key Contact Program. Key Contacts serve as the primary political liaison with the legislator to whom they are appointed. Following are the criteria and activities of a Key Contact:

- Reside within the legislative district in which the appointment is made, whenever possible.
- Serve as a Key Contact for the same term as the elective term of your legislators.
- Serve as the principal contact for MHC Calls-to-Action:
  - Establish a working relationship with the legislator.
  - Report to MHC a legislator's response to Calls-to-Action.
- Communicate questions or comments from legislator(s) to MHC staff.
- Communicate information or requests from MHC to legislator(s) as need.
- Meet as needed with legislators in your local area.

Please find the Key Contact sign-up sheet in the appendix.

If you're not sure who your State House and Senate legislators are, you can look them up using the "Legislator Lookup" tool on the Montana Legislature's website - [leg.mt.gov/map/](http://leg.mt.gov/map/). Just enter your home street address, city, and zip code and the tool will display your home's location on a map of Montana. When you click on that location it will display your State House and Senate legislators. You can then click on each of those members to get their contact information, in particular their email address and phone number.

We prefer that you serve as a Key Contact for your actual legislators. However, if you know a legislator personally but you don't live in their district, we still encourage you to consider serving as a Key Contact to that legislator as well. You can serve as a Key Contact to more than just the legislators representing your House and Senate districts.

## Respond to Calls-to-Action

As a Key Contact, MHC will be contacting you to take action on legislation at various stages of the lawmaking process. Please see a sample call-to-action on House Bill 16 from the 2019 Session in the appendix.

Even if you don't sign up to be a Key Contact, we recommend that you provide your email address to MHC so you can get on our email list to receive calls-to-action.

When you receive a call-to-action, use the lookup tool above to identify your legislator and his or her email address. We also provide contact information on legislators and candidates in the appendix.

If you've established personal relationship with a legislator, utilizing texting to reach them is appropriate. Otherwise, email is the preferred method of communication. Another option is to call the Montana Legislature's switchboard at 406-444-4800 to leave a message with the staff, who will deliver it to the legislator.

Again, if you hear back from your legislator on a call-to-action, remember to let MHC staff know what you've heard. Doing so will greatly assist MHC's lobbying efforts.

## Communicating with Your Legislators

As a part of MHC's legislative communications network, communicating directly with your elected officials will be an important activity during the legislative session. Communication will entail telephone calls, emails, writing letters, inviting elected officials to MHC functions in your area, and visiting your legislators in Helena when you're in town.

It's important to remember that your legislators face special demands on their time. They live and work in an unusual atmosphere and have several factors that will influence their views and thinking. So keep in mind these simple considerations:

**They want to do a good job.** Most people want to do a good job, but we sometimes forget that this basic human drive applies to elected officials, too.

**They want to be responsive.** They're in the business of pleasing people and sincerely want to accommodate you, but not at any cost. Other considerations may prevent them from doing so.

**They're not experts on your issues.** It took you years to acquire your knowledge of the affordable housing policy arena. Don't expect them to have your level of familiarity with industry issues. Share your knowledge with them using the issue briefs and talking points in the appendix. This is where you are a legislator's greatest asset.

**They are busy.** An elected official is public property, so to speak. Everyone wants a piece of their time. Their workload is staggering. Don't waste their time. When you communicate with them, be concise and purposeful.

**They have no accurate barometer of constituent thinking.** Unless you communicate your opinions on any issue, they have no way of knowing how their constituents really feel. Legislators really want to know what their constituents think but find that hard to gauge. As an affordable housing advocate this is a great advantage for you – it affords you the opportunity to influence what they think.

**They are elected to use their judgment.** They want to consider constituent opinion – and they do. But in the final analysis, they must study all available information. With our network of information and resources, we can have a considerable impact on a legislator's thinking process.

**They are concerned with numerous issues.** Legislators are confronted with many issues over the course of a legislative session. They can't possibly be familiar with the details of all of them.

**They want to get reelected.** Like you, they like their job and want to keep it. Reelection is public proof that they have done a good job. They want to be associated with issues that will get them reelected.

### **Tips for Getting Along with Your Legislators**

**Be fair.** Remember that a legislator represents all of his or her constituents regardless of their party or group affiliation. Don't condemn an official just because he or she may support measures that you think are too liberal or conservative.

**Be understanding.** Try at all times to put yourself in a legislator's shoes. Try to understand his or her problem, outlook, and goals. Only then will you be able to help that official understand your business and your problems. Be a part of the solution, not the problem.

**Be reasonable.** Recognize that there are legitimate differences of opinion. Never indulge in threats or recriminations. They are only confessions of weakness.

**Be friendly.** Don't contact an elected official only when you want something. Invite the elected official to your local board meetings and functions as a speaker. Go out of your way to keep in touch throughout the year.

**Be thoughtful.** Follow the Golden Rule – treat your legislators the way you would like to be treated. Commend the good things that your legislator does.

**Be cooperative.** If your legislator makes a reasonable request, try to comply with it as quickly as possible by contacting MHC staff. MHC can supply the information requested, and your assistance will be appreciated and not go unnoticed.

**Be realistic.** Don't expect everything will go your way, and don't be too critical when it does not. Be ready at all times to compromise gracefully.

**Be accurate.** Always be certain to have the necessary information and to do a good job of presenting your case. Thorough research is essential to any proposal. Use the issue briefs and talking points to guide your communications with your legislators.

**Be honest and upfront.** Under no circumstances should you stretch the truth to make your argument more palatable. If you learn of new facts that would alter your assumptions, don't hesitate to bring the new information to the attention of your legislator that you have been lobbying. Always remember: you have nothing to fear from the facts.

**Don't be a busybody.** Legislators don't like to be pestered, scolded, or preached to.

### **Recommendations for Email Writing**

Be brief and confine yourself to the call-to-action or the issue at hand. Don't use a letter as an opportunity to address other issues.

Make sure the elected official knows that you are a constituent.

Explain how the proposed legislation affects you personally as a housing advocate and why you support or oppose it. Make your case in two or three succinct points. Use facts and data to back up your position. For calls-to-action, you will be provided with instructions and factual information. Use the issue briefs and talking points in the appendix and any additional information accompanying the call-to-action.

Write the letter in your own style and preferably from your business or personal account. Make sure that your name, address, telephone number, and email are clearly stated.

Write the letter in a respectful manner. Thank your legislator for considering your views and offer to serve as a resource.

### **Tips for Testifying at Committee Hearings**

Testifying on a bill in committee can be a powerful way to influence the fate of the legislation you're supporting or opposing. And it's the only time a citizen can actively voice his or her opinion in the legislative process. Always be sure to let the MHC know if you're planning to travel to Helena to testify. The MHC and its lobbyists develop a strategy for every hearing on its bills and it's important that you're part of that process to ensure that the hearing goes off smoothly. Here are some do's and don'ts of testifying:



**Do:**

**Expect to wait.** It is nearly impossible to know exactly when a bill will be heard in committee. Most committee chairs will list the order that bills will be heard but the process can be unpredictable. Sometimes a sponsor doesn't show up when planned because he or she has another bill up for hearing in a different committee. Plan ahead and leave yourself enough time to be at the committee hearings until they adjourn.

**Introduce yourself when you testify.** "Madame Chair, I am John Smith, an affordable housing advocate from Billings."

**State your position at the beginning.** "I am here to speak in favor of HB 16."

**Be brief and concise.** State the reasons why you support or oppose the bill. Make certain your information is accurate, and use local examples when possible. If you have written information, give it to the committee secretary to distribute.

**Be polite.** This is especially important when you are opposing a bill. Use terms like "problematic" and "concerned", rather than "moronic" or "simple-minded." Polite and professional – the best way to go.

**If your legislator is on the committee, let them know that you intend to testify.** Committee members sometimes wander in and out of committee hearings. It's always a good idea to meet your legislator ahead of time (call for an appointment) to let them know what your position is on a bill up in committee, and to give them an opportunity to support your testimony. Most members will make a special attempt to be there if they know a constituent is speaking.

**Be prepared to answer questions.** If you are pulled back up to the podium for questions, once you've been asked the question, make sure you answer "through the chair and then follow with the name of the Representative that asked you the questions. For example, say, "Madam Chair and Representative Woods..." If the Representative asks a follow up question, use the same intro, every time. Most of the time, committee members will ask questions in order to support your position, so don't panic. If they appear to be argumentative, it's okay to disagree – just do it politely. "With all respect, Representative Woods, I disagree with your assessment. From my perspective, the issue involves...."

**Be smart.** If 17 people have already testified and have covered all of your pertinent points, just introduce yourself and say, "I support the bill for the reasons already stated." The chair and committee members will appreciate your brevity.

**Be prepared to just say your name and position and then sit down.** Due to time constraints, some chairs will limit testimony. If the committee is running out of time and the chair feels that proponents and opponents have adequately articulated their positions for the committee's sake, he or she will usually allow all witnesses to at least come forward to state their name, affiliation, and position on the bill. We know it doesn't seem fair if you traveled hours to get to the capitol to deliver your prepared testimony, only to find that you can only state your name, affiliation, and position. Just remember that when this occurs, you can always have your written testimony submitted into the record. Bring enough copies for each

member of the committee. And keep in mind that the hearing is about getting the interests of your group across to the committee.

**DON'T:**

***Read your testimony.*** It's the most common mistake made by witnesses. Never, ever, under any circumstances, come to a committee hearing and read a speech. If it can't fit on a recipe card, don't say it. If you have detailed information or data, state that you have written testimony to submit, and then quickly cover the key points.

***Be rude.*** It never helps. Even if you experience rude behavior on the part of committee members, remain polite and professional.

***Argue unnecessarily or inappropriately.*** Occasionally, members will engage witnesses in a back-and-forth discussion, which is perfectly okay. Just recognize that when you are probably not going to change their mind, back off before the discussion gets out of hand. Sometimes, the member you are debating is not the most popular person on the committee and you will have won over other members by remaining professional and polite.

***Be the lone ranger if working with other organizations.*** If your testimony is part of a larger "package" of information that is being made available by a group, do your part and then sit down. Rely on others to cover some of the other points of view. It shows that a coalition has been created to deal with the issue, and makes your input part of a much larger effort.

***Challenge the chair's authority to limit debate.*** The Legislature operates by its own rules. If the chair cuts you off after 20 seconds, say thank you and then sit down. If you get cut off, usually it's because you're repeating previous testimony or time for testimony is expiring. If this happens, just submit your written testimony.

***Ever get too "informal".*** Even if you went to high school with Representative Woods, never refer to him as anything but "Representative Smith". Calling him by his first name during testimony won't impress anyone, and could end up costing you a vote. Don't ever cross that line.

***Ever get too intimidated.*** It's perfectly okay to be nervous – most witnesses are to some extent. Just focus on providing a real-world perspective on the legislation – the result will be just fine. Your opinion is important, and most committee chairs and members will be much more accommodating to "rookie" witnesses than they are to professional lobbyists.

## APPENDIX – ISSUE BRIEFS

### Issue Brief – Coal Trust Housing Loan Program

Our communities are stronger when everyone can afford safe and healthy housing. Community and business leaders around the state have recognized this. Throughout rural and urban Montana, the shortage of housing Montanans can afford is affecting our quality of life and our economy. Current economic conditions, federal housing policies, and declining resources at the federal, state, and local levels adversely affect the ability of Montanans earning low- and moderate-income wages to obtain safe, decent, and affordable housing.

Because of this, stakeholders are looking to establish programs that help fund a diverse range of projects that provide affordable housing including multi-family rentals in Montana. While there are current programs available to fund the development and renovation of housing in Montana, gaps remain as there is limited available capital and growing demand. NeighborWorks Montana currently provides pre-development and short-term financing for the development and preservation of housing across Montana but does not have the capital to provide longer-term financing.

#### **The passage of House Bill 16 was a significant step in the right direction.**

Like the Veterans Home Loan Fund created in 2011, House Bill 16 created a housing loan program for multi-family projects serving low- and moderate-income Montanans with \$15 million invested by the Montana Board of Investments (BOI) from the permanent coal tax trust fund to be administered by the Montana Board of Housing (BOH). While the Veteran’s program provides loans to individual veterans to purchase homes, this program provides loans to multi-family projects providing housing for Montanans. BOI handles the fiduciary responsibility for all the cash flow in and out of the permanent coal tax trust fund and BOH administers the program portion. All funds are under the control of BOI. Program costs are paid from interest earned on the loans with the remaining interest and all principal going back into the permanent coal tax trust fund.

The new program leverages more public and private resources for affordable housing development by providing critical “gap” financing and could be coupled with a state workforce housing tax credit if MHC is able to get that enacted. The program doesn’t “spend” money from the coal trust; it’s invested in loans to housing projects for Montana’s workforce. In fact, as projects pay back the principal and interest, the coal trust is made whole.

#### **Eligible Loan Activities**

With the passage of HB 16 in the 2019 Session, the Montana Board of Housing is able to make a loan for the following purposes:

- Matching funds for public or private funds available from other sources for the development of housing for low- and moderate-income households;
- Bridge financing necessary to make development of housing for low- and moderate-income households feasible;
- Acquisition of existing housing stock for the purpose of preservation of or conversion to housing for low- and moderate-income households;
- Preconstruction technical assistance for housing for low- and moderate-income households in rural areas and small cities and towns;
- Acquisition of land for housing developments, land banking, and land trusts.

The \$15 million authorized by the 2019 Legislature has already been spent and MHC is working with the Local Government Interim Committee to recommend legislation to the 2021 Legislature to add an additional \$15 million to the program. The \$14.5 million of coal trust loans leveraged total development expenditures of \$32.3 million, bringing in \$17.8 million of outside funding.

### **Families and Individuals Flourish When They Can Afford Their Housing**

Our communities are stronger when everyone can afford a safe and healthy housing. Montana's real estate market can be one of opportunity for everybody. Our communities can be welcoming places where Veterans returning from service can have housing and raise their families. They can be supportive places where our elderly can continue to live healthily. And they can be safe places where kids eat dinner, learn, spend time with family and play with neighbors. When people can afford their housing, the economic and social return provides a benefit for us all. People living within their budget can pay for nutritious food and medical care. They can become more involved in local groups, associations, and neighborhoods. All this builds health and wealth for the person, family, and community.

### **The Economy Grows When the Workforce Can Afford Their Housing**

The benefits of diverse range of housing types Montanans can afford extend to the broader community:

- Development of workforce housing supports existing jobs, creates both immediate and long-term employment opportunities, and increases spending in a local economy.
- Creating more workforce housing allows employers to attract and retain employees, growing their business, and enhancing regional economic competitiveness.
- Development and rehabilitation of affordable housing provides immediate fiscal benefits for state and local government, including building fees, impact fees, inspection fees, special assessments, corporate income taxes on builders' profits, and income taxes on construction workers and other professionals involved in the development. The Montana Department of Commerce's Census and Economic Information Center estimates New Construction supports 13 jobs earning \$600,000 in labor income per \$1 million invested in construction of new housing.

### **Market-Rate Housing Won't Be Undermined by the Development of Affordable Housing**

A diverse real estate market that supports many different levels and types of housing Montanans can afford will better support the overall economic development of the state. Montana can attract industry, grow businesses, and allow other kinds of economic development if there is a robust housing portfolio. A rising tide lifts all boats.

Given market circumstances, developers can't build multifamily housing for sale today that is affordable to working families and our elderly unless they have funding tools such as the housing loan program. The cost of construction is too high. For Montana to increase the supply of housing that is affordable to working families, gap financing like the Coal Trust housing loan program is necessary.

This Montana based solution of a housing loan program has the advantage of creating a diverse range of housing developments that reach the very poor, for example seniors living on minimal social security income, to working families earning moderate wages looking to secure housing.

Finally, the housing loan program encourages the construction of smaller developments, which are harder to do yet very important in rural areas.

### **How the Housing Loan Program Works**

The housing loan program is a Montana-based solution that creates a source of long-term funding that makes a housing development feasible so that it can provide rents or sales prices affordable to Montanans. It provides “gap” financing to a development that will leverage other public and private investment which will provide most of the funding for any given development. The program loans are in secondary position to the primary lender; however, the loans are secured with real estate by a lien on title. Additionally, the BOH requires developer guarantees for loan repayment.

Housing is considered affordable if the household is paying no more than 30% of its income for housing costs (including utilities). This program benefits those earning low and moderate incomes in Montana.

**When we invest in housing people can afford, our community members will have healthier, more successful lives, which will help our whole community.**

### **Issue Brief – State Workforce Housing Tax Credit**

Community and business leaders around the state recognize the need for more housing that is safe, stable, and affordable. Throughout rural and urban Montana, the housing shortage is affecting our quality of life and our economy. Each year, 10 to 12 worthy housing development applications are denied by the Montana Board of Housing (BOH) because of lack of funds.

A workforce housing tax credit would help investors leverage and augment the Federal Housing Tax Credit (FHTC), leading to more workforce housing developments across Montana that working families and seniors can afford to live in.

#### **Key Provisions of a State Workforce Housing Tax Credit**

A state workforce housing tax credit would create a tax credit against taxes imposed by:

1. Individual Income Tax (MCA 15-30)
2. Corporate Income Tax (MCA 15-31)
3. Insurance Premium Tax (MCA 33-2-705)
4. Insurance Retaliatory Fees, Taxes, and Other Obligations (MCA 33-2-709)
5. Tax on Fire Insurance Premiums (MCA 50-3-109)

The Montana Department of Commerce’s Board of Housing would oversee distribution of the credits for qualified housing developments.

The aggregate amount of the credits awarded for qualified developments cannot exceed \$3.2 million annually.

Taxpayers claiming the credit are required to submit their eligibility statement with their tax return.

The Board of Housing cannot allocate more of the federal and state credits than necessary to achieve financial feasibility for a development.

## Workforce Housing Helps Families and Individuals Flourish

Households with modest means need safe, suitable housing that they can afford. When housing is affordable, low- and moderate-income families have room in their budgets for nutritious food and necessary medical care. The stability of an affordable mortgage or rent has positive effects on childhood development, success at school, and health outcomes for families and individuals. Affordable housing reduces poverty rates and alleviates pressure on social service budgets.

## Workforce Housing Development Helps the Economy

The benefits of workforce housing development extend to the broader community:

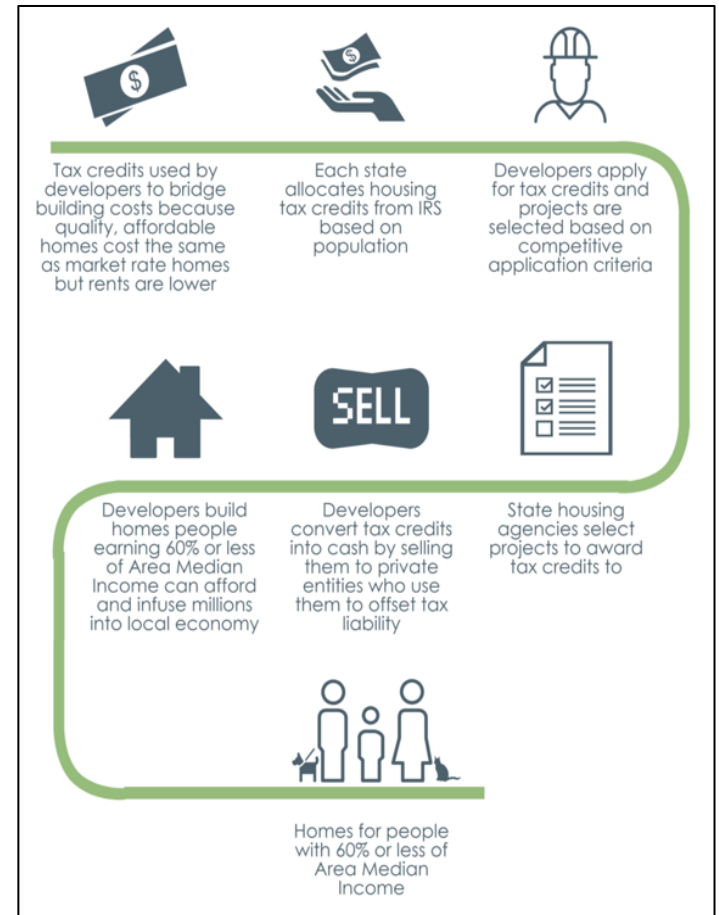
- Development of workforce housing creates both immediate and long-term employment opportunities and spending in a local economy.
- Creating more workforce housing allows employers to attract and retain employees, growing their business and the regional economic competitiveness.
- Development and rehabilitation of affordable housing provides immediate fiscal benefits for state and local government, including building fees, impact fees, inspection fees, special assessments, corporate income taxes on builders' profits, and income taxes on construction workers.

Projections for Montana indicate that over 10-year period a state tax credit would mobilize enough private capital to produce 18,000 homes and apartments and generate over \$828 million in economic activity in the form of construction, job creation, ongoing property operation, increased incomes, and property value increases.

## How the World of Housing Tax Credits Works

**The state workforce housing tax credit would simply serve as a companion to the FHTC and would follow many of the same federal rules and requirements as well as those adopted by Montana.**

The FHTC helps finance the production and preservation of rental housing that is affordable to working families and seniors. It was authorized through the Tax Reform Act of 1986 – spearheaded by Congressman Jack Kemp and signed into law by President Ronald Reagan – to give private investors a federal income tax credit as an incentive to make equity investments in affordable rental housing. The equity raised is used to construct new properties, acquire and renovate existing buildings, and refinance and renovate existing rental housing properties. The program has been a huge success, producing over 2.3 million units with a 97% occupancy rate in 2016, and a foreclosure rate of less than 1% throughout the program.



### Income Eligibility and Affordability Requirements

The basic requirements of the FHTC program focus on how low the rents must be and how long those rents must remain low. A unit is considered affordable if the household is paying no more than 30% of its income for housing costs (including utilities). Households earning up to 80% of area median income (AMI) are allowed in FHTC-assisted units as long as the average income of all households in assisted units is 60% of AMI or below.

In exchange for tax credits, properties are required to comply with investment regulations for 15 years and meet rent limitations for at least 30 years. Monitoring compliance involves regularly certifying that only income-eligible households live in assisted units and are paying associated rents and conducting housing quality inspections. Investors in projects that fail to comply can lose their tax benefit.

### Types of Credits and Allocation Process

The FHTC program offers two types of tax credits, a 9% tax credit and a 4% tax credit. To qualify for tax credits, property owner must rent to low- and moderate-income people for 30 years. Monitoring involves certifying that only income-eligible households live in assisted units and are paying associated rents and conducting housing quality inspections. Investors in projects that fail to comply can lose their tax benefit. Investors claim tax credits over a 10-year period and are subject to a 15-year compliance period.

Annually, 9% credits are allocated to Montana by the IRS for eligible developments, as determined by the Montana Board of Housing. The Qualified Allocation Plan helps determine which projects win FHTC awards. The 9% credits are highly competitive, with many more projects requesting credits than can be funded. **A state workforce housing tax credit would increase the pool of funds available thereby increasing the number of projects that receive funding, especially those in rural areas.**

Projects that receive at least half of their funding through tax-exempt bond financing are eligible for 4 % tax credits. The 4% credits are not as competitive but are much harder to finance because 4% credits supply only half of the equity. **A workforce housing tax credit would add a much-needed source of funding for 4% developments, increasing the number of developments that will be built.**

**TABLE 1.** Number of Jobs Created During and After the Construction of a 100-Unit Multifamily Property

	Family LIHTC	Senior LIHTC	Market-Rate Apartments
Jobs Created Directly and Indirectly by New Construction	80	75	80
Jobs Supported by Spending Locally Earned Wages (Induced)	42	39	42
Jobs Supported by Households Occupying New Homes (Ongoing)	30	32	32

Source: National Association of Home Builders, 2010 and 2009a

## **Financing**

The FHTC and the WHTC programs provide direct equity from private investors in exchange for income tax benefits, reducing project need for debt and subsidies. **A state workforce housing tax credit would create a Montana workforce housing tax credit to channel more equity into developments to make construction feasible, while keeping rents affordable.**

## **APPENDIX – TALKING POINTS**

### **Talking Points – Coal Trust Housing Loan Program**

#### **Shortage of Housing Affordable to Montanans**

- Throughout rural and urban Montana, the shortage of housing Montanans can afford is affecting our quality of life and our economy.
- Current economic conditions, federal housing policies, and declining resources at the federal, state, and local levels adversely affect the ability of Montanans earning low- and moderate-income wages to obtain safe, decent, and affordable housing.

#### **Looking for Solutions**

- Stakeholders are looking to establish programs that help fund a diverse range of projects that provide affordable housing for purchase in Montana.
- While there are current programs available to fund the development and renovation of housing in Montana, gaps remain as there is limited available capital and growing demand.

#### **House Bill 16 from the 2019 Legislature Established One Solution**

- Like the Veterans Home Loan Fund created in 2011, House Bill 16 created a housing loan program for multi-family projects serving Montanans with low- and moderate-incomes with \$15 million invested by the Montana Board of Investments (BOI) from the permanent coal tax trust fund to be administered by the Montana Board of Housing (BOH).
- While the Veteran's program provides loans to individual veterans to purchase homes, this program would provide loans to multi-family projects providing housing for Montanans.
- The program wouldn't "spend" money from the coal trust; it would be invested in a manner like the Veterans Home Loan Program. As projects pay back the principal and interest, the coal trust is made whole.
- The \$14.5 million of coal trust loans leveraged total development expenditures of \$32.3 million, bringing in \$17.8 million of outside funding.
- MHC has worked with the 2019-2020 Local Government Interim Committee to recommend adding \$15 million to the Coal Trust housing loan program.



### **Workforce Housing Helps Families and Individuals Flourish**

- When housing is affordable, families with low- and moderate-incomes can flourish because they are able to put nutritious food on the table and receive necessary medical care.
- Research has shown that the stability of an affordable mortgage or rent can have profound effects on childhood development and school performance.

### **Workforce Housing Development Helps the Economy**

- Development of workforce housing supports existing jobs, creates both immediate and long-term employment opportunities and increases spending in a local economy.
- Creating more workforce housing allows employers to attract and retain employees, growing their business and regional economic competitiveness.
- The Montana Department of Commerce's Census and Economic Information Center estimates new construction supports 13 jobs earning \$600,000 in labor income per \$1 million invested in construction of new housing.

### **It's time Montana develops home-grown solutions that will maximize federal and private investment to address our state-wide housing challenges.**

### **When we invest in housing people can afford, our community members will have healthier, more successful lives, which will help our whole community.**

### **Talking Points – State Workforce Housing Tax Credit**

- Throughout rural and urban Montana, the shortage of housing Montanans can afford is affecting our quality of life and our economy. Each year, the Montana Board of Housing can only fund approximately 25% of worthy multifamily rental housing development applications because of lack of funds.
- A state workforce housing tax credit is one of those solutions. It would help investors leverage and augment the Federal Housing Tax Credit (FHTC), leading to more housing across Montana that working families and seniors can afford.

### **Workforce Housing Helps Families and Individuals Flourish**

- When housing is affordable, families with low- and moderate-incomes can flourish because they are able to put nutritious food on the table and receive necessary medical care.
- Research has shown that the stability of an affordable mortgage or rent can have profound effects on childhood development and school performance.

### **Workforce Housing Development Helps the Economy**

- Development of workforce housing supports existing jobs, creates both immediate and long-term employment opportunities and increases spending in a local economy.

- Creating more workforce housing allows employers to attract and retain employees, growing their business and regional economic competitiveness.
- Projections for Montana indicate that over 10-year period a state tax credit would mobilize enough private capital to produce 18,000 homes and apartments and generate over \$828 million in economic activity in the form of construction, job creation, ongoing property operation, increased incomes, and property value increases.

#### **Development of Affordable Housing Won't Undermine Market-Rate Housing**

- Given market circumstances, developers can't build apartments today that are affordable to working families unless they have tax credits. The cost of construction is too high.
- For Montana to increase the supply of housing that is affordable to working families, tax credits are necessary. Federal tax credits are too limited. A state tax credit is needed to more than triple the number of housing units built each year.
- Tax credit developments have the advantages of reaching the very poor (by dedicating a portion of each development to serving families with very low-incomes) and those earning moderate wages.
- A state tax credit would encourage the construction of smaller developments, which are harder to do yet very important in rural areas.

**When we invest in housing people can afford, our community members will have healthier, more successful lives, which will help our whole community.**

## **APPENDIX – KEY CONTACT SIGN-UP SHEET**

### **REQUIREMENTS / ACTIVITIES**

1. Reside within the legislative district in which the appointment is made, whenever possible.
2. Serve the association as a key contact for the same term as the elective term of their legislator.
3. Serve as the principal contact for MHC Calls-to-Action:
  - a. Establish a working relationship with the legislator
  - b. Report to MHC a legislator's response to Calls-to-Action
4. Communicate questions or comments from legislator(s) to MHC staff.
5. Communicate information or requests from MHC staff to legislator(s) as needed.
6. Meet as needed with legislators in your local area.

**YES, I would like to serve as a key contact for legislators in my area. My contact information is (your email address is critical):**

**Name:** \_\_\_\_\_

**Address:** \_\_\_\_\_

**Email Address:** \_\_\_\_\_

**Mobile Number:** \_\_\_\_\_

**Your State Senator:** \_\_\_\_\_

**Your State House Representative:** \_\_\_\_\_

**Please provide the names of other legislators you are acquainted with in your area:** \_\_\_\_\_

**Email to:**

Peggy Trenk, Executive Director, MHC, [peggytrenk@aol.com](mailto:peggytrenk@aol.com)

## **APPENDIX – SAMPLE CALL-TO-ACTION**

### **House Bill 16 Call-to-Action**

We are excited to inform you that House Bill 16 has passed in the House Taxation Committee as amended on Friday, February 1. The amendments entail the following changes to the affordable housing loan program that HB 16 would create:

1. It restricts the loans for multifamily projects only.
2. All loans are in first lien position and may not exceed 95% of total development costs.
3. Sets a minimum interest rate of 0.5% less than the interest rate charged for a loan funded by the existing Housing Montana Fund.
4. Requires that the Board of Housing and the loan recipient to pay half of the loan servicing fee.

The Montana Housing Coalition believes that these amendments are workable and will establish a loan program that will enhance the development of affordable housing units around the state, in particular renovation projects.

**We anticipate that HB 16 will be on the House floor for second reading either Tuesday or Wednesday of this week.**

We encourage you to take a moment to contact your representative please. If you don't know who your representative is, you can use the legislator look-up tool on the Montana Legislature's web site – <https://leg.mt.gov/map/>.

Please feel free to share this Call-to-Action with your colleagues, friends, and family urging them to help with the grassroots effort.

Before you send out a message to legislators, take a moment to read the attached HB 16 one-pager to familiarize yourself with the amended proposal. We've provided some talking points for any emails, phone calls, or texts you make to legislators. Please feel free to share the one-pager with anyone you contact.

Lastly, if a legislator responds to your email, phone call, or text, please share their response with us.

Thank you for your time and support for House Bill 16!

## APPENDIX – 2020 ELECTION CYCLE LEGISLATOR/CANDIDATE CONTACT LIST

- *Italicized* names denote incumbents
- Gray-shaded rows denote Senate holdovers (Senators serve 4-year terms so may not be up for reelection this cycle)

### Montana House

Name	Party	District	Mailing Address	City	Zip	Phone	Email
<i>Steve Gunderson</i>	R	HD 01	310 Conifer Rd	Libby	59923	334-4370	<a href="mailto:gundy4mthd1@gmail.com">gundy4mthd1@gmail.com</a>
Marvin Sather	D	HD 01	216 Nevada Ave Apt E	Libby	59923	509-995-9519	<a href="mailto:marv@a-lcompressedgases.com">marv@a-lcompressedgases.com</a>
<i>Neil Duram</i>	R	HD 02	P.O. BOX 1226	Eureka	59917	471-2356	<a href="mailto:neil_duram@yahoo.com">neil_duram@yahoo.com</a>
Lori Ramesz	D	HD 02	P.O. Box 1623	Eureka	59917	890-9064	<a href="mailto:ramesz@mac.com">ramesz@mac.com</a>
Braxton Mitchell	R	HD 03	P.O. Box 1765	Columbia Falls	59912	314-9474	<a href="mailto:BraxtonMMitchell@gmail.com">BraxtonMMitchell@gmail.com</a>
Debo Powers	D	HD 03	P.O. Box 1602	Columbia Falls	59912	407-0787	<a href="mailto:PowersForThePeopleHD3@gmail.com">PowersForThePeopleHD3@gmail.com</a>
<i>Matt Regier</i>	R	HD 04	P.O. Box 9763	Kalispell	59904	253-3293	<a href="mailto:mattregierhd4@gmail.com">mattregierhd4@gmail.com</a>
Catherine Owens	R	HD 05	329 Shady River Ln	Whitefish	59937	512-921-1480	<a href="mailto:texasowens@mac.com">texasowens@mac.com</a>
<i>Dave Fern</i>	D	HD 05	211 dakota ave	whitefish	59937	212-0674	<a href="mailto:fern@montanasky.net">fern@montanasky.net</a>
Jerramy Dear-Ruel	D	HD 06	P.O. BOX 2056	Whitefish	59937	544-6625	<a href="mailto:jerramyisworking4uhd6@gmail.com">jerramyisworking4uhd6@gmail.com</a>
Amy Regier	R	HD 06	164 Parkridge Dr	Kalispell	59901	253-8421	<a href="mailto:regiermt@gmail.com">regiermt@gmail.com</a>
Ross Frazier	D	HD 07	319 Commons Way	Kalispell	59901	580-4949	<a href="mailto:rossfrazier@gmail.com">rossfrazier@gmail.com</a>
<i>Frank Garner</i>	R	HD 07	Box 10176	Kalispell	59904	471-7197	<a href="mailto:frankgarnerhd7@gmail.com">frankgarnerhd7@gmail.com</a>
Nicholas Ramlow	L	HD 07	977 Foy's Lake Rd	Kalispell	59901	309-0943	<a href="mailto:n.ramlow@outlook.com">n.ramlow@outlook.com</a>
<i>John Fuller</i>	R	HD 08	P.O. Box 7002	Kalispell	59904	253-4897	<a href="mailto:apacherider11@gmail.com">apacherider11@gmail.com</a>
Brian Putnam	R	HD 09	303 Ponderosa Street	Kalispell	59901	253-7359	<a href="mailto:brianputnamHD9@gmail.com">brianputnamHD9@gmail.com</a>
Jennifer Allen	D	HD 10	P.O. Box 2375	Bigfork	59911	270-3190	<a href="mailto:allen4hd10@gmail.com">allen4hd10@gmail.com</a>
<i>Mark Noland</i>	R	HD 10	P.O. Box 1852	Bigfork	59911	253-8982	<a href="mailto:marknolandhd10@gmail.com">marknolandhd10@gmail.com</a>
<i>Derek Skees</i>	R	HD 11	P.O. Box 9134	Kalispell	59904	212-5493	<a href="mailto:derekskees@gmail.com">derekskees@gmail.com</a>
Gerry Browning	D	HD 12	P.O. Box 264	Polson	59860	270-5514	<a href="mailto:gerrybrowning.hd12@gmail.com">gerrybrowning.hd12@gmail.com</a>
Linda Reksten	R	HD 12	118 Long Lake Dr	Polson	59860	471-8359	<a href="mailto:reksten4mthouse@gmail.com">reksten4mthouse@gmail.com</a>
Paul Fielder	R	HD 13	P.O. Box 2558	Thompson Falls	59873	210-5943	<a href="mailto:paulfielder@blackfoot.net">paulfielder@blackfoot.net</a>
Colleen Hinds	D	HD 13	10 Picadilly Lane	Heron	59844	847-2209	<a href="mailto:colleenhinds@hotmail.com">colleenhinds@hotmail.com</a>
Cade Stiles	L	HD 13	P.O. BOX 1073	Thompson Falls	59873	493-8747	<a href="mailto:stiles.cade@gmail.com">stiles.cade@gmail.com</a>

<b>Name</b>	<b>Party</b>	<b>District</b>	<b>Mailing Address</b>	<b>City</b>	<b>Zip</b>	<b>Phone</b>	<b>Email</b>
<i>Denley Loge</i>	R	HD 14	1296 Four Mile Rd	St. Regis	59866	649-2368	<a href="mailto:Denleylogehd14@gmail.com">Denleylogehd14@gmail.com</a>
<i>Marvin Weatherwax Jr</i>	D	HD 15	P.O. Box 2828	Browning	59417	270-7571	<a href="mailto:marvinwwaxjr@hotmail.com">marvinwwaxjr@hotmail.com</a>
<i>Tyson Running Wolf</i>	D	HD 16	P.O. Box 377	Browning	59417	845-2115	<a href="mailto:trwolves@gmail.com">trwolves@gmail.com</a>
<i>Ross Fitzgerald</i>	R	HD 17	451 1st Rd N.E	Fairfield	59436	788-1443	<a href="mailto:rhfitz@3rivers.net">rhfitz@3rivers.net</a>
<i>Barnett Sporkin-Morrison</i>	D	HD 17	P.O. Box 1364	Choteau	59422	468-5210	<a href="mailto:barnettforhouse@gmail.com">barnettforhouse@gmail.com</a>
<i>Llew Jones</i>	R	HD 18	1102 4th Ave SW	Conrad	59425	271-3104	<a href="mailto:liones@mtbus.net">liones@mtbus.net</a>
<i>Wendy McKamey</i>	R	HD 19	P.O. Box 333	Ulm	59485	868-5006	<a href="mailto:wsgmckamey@gmail.com">wsgmckamey@gmail.com</a>
<i>George Anthony Schultz</i>	L	HD 19	P.O. Box 6258	Great Falls	59406	315-2382	<a href="mailto:starhealth@charter.net">starhealth@charter.net</a>
<i>Fred Anderson</i>	R	HD 20	P. O. Box 6921	Great Falls	59406	761-4042	<a href="mailto:professorchevy@hotmail.com">professorchevy@hotmail.com</a>
<i>Melissa Smith</i>	D	HD 20	2736 Clover Dr	Great Falls	59404	315-3733	<a href="mailto:mls3ster@gmail.com">mls3ster@gmail.com</a>
<i>Ed Buttrey</i>	R	HD 21	708 Central Avenue	Great Falls	59401	750-6798	<a href="mailto:ed@buttreyrealty.com">ed@buttreyrealty.com</a>
<i>Jaime Horn</i>	D	HD 21	521 1st AVE SW	Great Falls	59404	899-8808	<a href="mailto:officialjaimehorn@gmail.com">officialjaimehorn@gmail.com</a>
<i>Lola Sheldon-Galloway</i>	R	HD 22	202 Sun Prairie Rd	Great Falls	59404	727-4963	<a href="mailto:LOLA4Montana@yahoo.com">LOLA4Montana@yahoo.com</a>
<i>Jasmine Taylor</i>	D	HD 22	P.O. Box 2983	Great Falls	59403	231-9995	<a href="mailto:jasmineforgf@gmail.com">jasmineforgf@gmail.com</a>
<i>Brad Hamlett</i>	D	HD 23	P.O. Box 49	Cascade	59421	799-5885	<a href="mailto:senatorhamlett@gmail.com">senatorhamlett@gmail.com</a>
<i>Scot Kerns</i>	R	HD 23	900 34th St N	Great Falls	59401	618-920-3479	<a href="mailto:kernsds@gmail.com">kernsds@gmail.com</a>
<i>Barbara Bessette</i>	D	HD 24	P.O. Box 1263	Great Falls	59403	403-5656	<a href="mailto:bessette4montana@gmail.com">bessette4montana@gmail.com</a>
<i>Steven Galloway</i>	R	HD 24	202 Sun Prairie Rd	Great Falls	59404	750-4723	<a href="mailto:galloway4mt@gmail.com">galloway4mt@gmail.com</a>
<i>Steve Gist</i>	R	HD 25	339 1st ST N	Cascade	59421	231-4050	<a href="mailto:giststeve@gmail.com">giststeve@gmail.com</a>
<i>Jasmine Krotkov</i>	D	HD 25	P.O. Box 1	Neihart	59465	781-5699	<a href="mailto:jasminekrotkov4mt@gmail.com">jasminekrotkov4mt@gmail.com</a>
<i>Helena Lovick</i>	D	HD 26	P.O. Box 2131	Great Falls	59403	Not Listed	<a href="mailto:electhelenalovick@gmail.com">electhelenalovick@gmail.com</a>
<i>Jeremy Trebas</i>	R	HD 26	P.O. Box 2364	Great Falls	59403	899-5445	<a href="mailto:trebasformthouse@gmail.com">trebasformthouse@gmail.com</a>
<i>Josh Kassmier</i>	R	HD 27	P.O. Box 876	Fort Benton	59442	781-5386	<a href="mailto:jkassmier@live.com">jkassmier@live.com</a>
<i>Ed Hill</i>	R	HD 28	P.O. Box 5	Havre	59501	390-1098	<a href="mailto:hillforhouse28@gmail.com">hillforhouse28@gmail.com</a>
<i>Krystal Steinmetz</i>	D	HD 28	4031 9th St. W	Havre	59501	399-1217	<a href="mailto:krystalforHD28@gmail.com">krystalforHD28@gmail.com</a>
<i>Dan Bartel</i>	R	HD 29	P.O. Box 1181	Lewistown	59457	366-4160	<a href="mailto:barteldjb@gmail.com">barteldjb@gmail.com</a>
<i>Wylie Galt</i>	R	HD 30	106 71 Ranch Rd	Martinsdale	59053	220-0157	<a href="mailto:wyliegaltformt@gmail.com">wyliegaltformt@gmail.com</a>
<i>Cindy Palmer</i>	D	HD 30	P.O. Box 41	Geyser	59447	459-1538	<a href="mailto:CindyPalmer1961@gmail.com">CindyPalmer1961@gmail.com</a>
<i>Frank Smith</i>	D	HD 31	P.O. Box 729	Poplar	59255	942-0616	<a href="mailto:clairena@hughes.net">clairena@hughes.net</a>

Name	Party	District	Mailing Address	City	Zip	Phone	Email
G. Bruce Meyers	R	HD 32	297 Sagebrush Street	Box Elder	59521	399-7776	<a href="mailto:gilbertmeyers188@gmail.com">gilbertmeyers188@gmail.com</a>
<i>Jonathan Windy Boy</i>	D	HD 32	Box 250	Box Elder	59521	945-1805	<a href="mailto:rep32jwb@gmail.com">rep32jwb@gmail.com</a>
<i>Casey Knudsen</i>	R	HD 33	P.O. Box 18	Malta	59538	390-0274	<a href="mailto:caseyknudsen@gmail.com">caseyknudsen@gmail.com</a>
<i>Rhonda Knudsen</i>	R	HD 34	P.O. Box 734	Culbertson	59218	489-5253	<a href="mailto:rhondaknudsenformontana@hotmail.com">rhondaknudsenformontana@hotmail.com</a>
Brandon Ler	R	HD 35	11313 County Rd 338	Savage	59262	480-5687	<a href="mailto:doublefencing@gmail.com">doublefencing@gmail.com</a>
Bob Phalen	R	HD 36	444 Rd 222	Lindsay	59339	939-1187	<a href="mailto:clearcrk@miDrrs.com">clearcrk@miDrrs.com</a>
Jacob Kitson	L	HD 37	P.O. Box 42	Terry	59349	936-349-6657	<a href="mailto:liberty4mt2020@gmail.com">liberty4mt2020@gmail.com</a>
Jerry Schillinger	R	HD 37	Box 147	Circle	59215	974-2478	<a href="mailto:j8960@miDrrs.com">j8960@miDrrs.com</a>
<i>Kenneth Holmlund</i>	R	HD 38	1612 Tompy St	Miles City	59301	951-6764	<a href="mailto:holmlund@miDrrs.com">holmlund@miDrrs.com</a>
<i>Geraldine Custer</i>	R	HD 39	Box 1075	Forsyth	59327	351-1235	<a href="mailto:jericester@yahoo.com">jericester@yahoo.com</a>
Kris Spanjian	D	HD 40	P.O.Box 21875	Billings	59104	861-4895	<a href="mailto:spanjian4mtleg@gmail.com">spanjian4mtleg@gmail.com</a>
<i>Barry Usher</i>	R	HD 40	6900 S Frontage Rd	Billings	59101	Not Listed	<a href="mailto:barry4montana@gmail.com">barry4montana@gmail.com</a>
Rynalea Whiteman Pena	D	HD 41	P.O. Box 655	Lame Deer	59043	477-8717	<a href="mailto:pena_rynalea@yahoo.com">pena_rynalea@yahoo.com</a>
<i>Sharon Stewart Peregoy</i>	D	HD 42	P.O. Box 211	Crow Agency	59022	639-2198	<a href="mailto:s.peregoy53@gmail.com">s.peregoy53@gmail.com</a>
Melody Benes	L	HD 43	1511 Poly Dr	Billings	59102	426-8720	<a href="mailto:melody.benes@gmail.com">melody.benes@gmail.com</a>
Kerri Seekins-Crowe	R	HD 43	480 Pinon Dr	Billings	59105	208-6587	<a href="mailto:Kerri4MT@gmail.com">Kerri4MT@gmail.com</a>
Larry Brewster	R	HD 44	1216 Babcock Blvd	Billings	59105	670-0929	<a href="mailto:larry05@bresnan.net">larry05@bresnan.net</a>
Terry Dennis	D	HD 44	P.O. Box 50545	Billings	59105	860-2168	<a href="mailto:terden21@bresnan.net">terden21@bresnan.net</a>
Nate McKenty	L	HD 45	1231 Lynn Ave	Billings	59102	417-0007	<a href="mailto:mckenty4mt@gmail.com">mckenty4mt@gmail.com</a>
Katie Zolnikov	R	HD 45	2812 N 2nd Ave. Apt 2	Billings	59101	690-1684	<a href="mailto:katiezolnikov@gmail.com">katiezolnikov@gmail.com</a>
Zach Ladson	D	HD 46	500 19th Street W	Billings	59102	208-4496	<a href="mailto:zladson@hotmail.com">zladson@hotmail.com</a>
<i>Bill Mercer</i>	R	HD 46	P.O. Box 2118	Billings	59103	698-1671	<a href="mailto:wwmercercer406@gmail.com">wwmercercer406@gmail.com</a>
<i>Kathy Kelker</i>	D	HD 47	2438 Rimrock Rd	Billings	59102	698-5610	<a href="mailto:katharink70@gmail.com">katharink70@gmail.com</a>
TJ Smith	R	HD 47	2238 Ridgeview Dr	Billings	59105	690-5676	<a href="mailto:tjsmithd47@gmail.com">tjsmithd47@gmail.com</a>
<i>Jessica Karjala</i>	D	HD 48	6125 Masters Blvd	Billings	59106	672-8681	<a href="mailto:jessica.karjala@gmail.com">jessica.karjala@gmail.com</a>
Leigh Verrill-Rhys	R	HD 48	2720 Cook Avenue	Billings	59102	480-414-4193	<a href="mailto:leigh.verrill-rhys@outlook.com">leigh.verrill-rhys@outlook.com</a>
<i>Emma Kerr-Carpenter</i>	D	HD 49	425 Burlington Ave	Billings	59101	Not Listed	<a href="mailto:emmaformontana@gmail.com">emmaformontana@gmail.com</a>
Colin Michael Nygaard	R	HD 49	101 N River Rd	Laurel	59044	850-1800	<a href="mailto:colinnygaard@gmail.com">colinnygaard@gmail.com</a>
<i>Jade Bahr</i>	D	HD 50	P.O. Box 822	Billings	59103	855-7123	<a href="mailto:jade.bahr@mtleg.gov">jade.bahr@mtleg.gov</a>

Name	Party	District	Mailing Address	City	Zip	Phone	Email
Mallerie Stromswold	R	HD 50	P.O. Box 5315	Helena	59604	670-0698	<a href="mailto:mallerie_stromswold@icloud.com">mallerie_stromswold@icloud.com</a>
Frank Fleming	R	HD 51	626 S 38TH ST W UNIT 22	Billings	59102	652-6673	<a href="mailto:fleminglor@aol.com">fleminglor@aol.com</a>
Anne Giuliano	D	HD 51	P.O. Box 51341	Billings	59105	670-4680	<a href="mailto:annegiuliano@gmail.com">annegiuliano@gmail.com</a>
Hannah Olson	D	HD 52	46 Monroe St	Billings	59101	200-3068	<a href="mailto:hannahformontana@gmail.com">hannahformontana@gmail.com</a>
Jimmy Patelis	R	HD 52	6312 Gray Hawk Way	Billings	59106	671-9972	<a href="mailto:jimmyformontana@gmail.com">jimmyformontana@gmail.com</a>
Dennis Lenz	R	HD 53	P.O. Box 20752	Billings	59104	671-7052	<a href="mailto:lenz4legislature@outlook.com">lenz4legislature@outlook.com</a>
Terry Moore	R	HD 54	5414 Green Teal Dr	Billings	59106	671-5393	<a href="mailto:terill.moore@icloud.com">terill.moore@icloud.com</a>
Ryan Thomsen	D	HD 54	P.O. Box 20554	Billings	59104	672-8803	<a href="mailto:Rtformt@gmail.com">Rtformt@gmail.com</a>
Vince Ricci	R	HD 55	1231 5th Ave	Laurel	59044	855-9153	<a href="mailto:ricthriftway@montana.com">ricthriftway@montana.com</a>
Sue Vinton	R	HD 56	P.O. Box 236	Billings	59103	855-2625	<a href="mailto:sue@vintonlog.com">sue@vintonlog.com</a>
Fiona Nave	R	HD 57	38 Quinn Coulee Rd	Columbus	59019	321-4602	<a href="mailto:fionanave@reagan.com">fionanave@reagan.com</a>
Seth Berglee	R	HD 58	P.O. Box 340	Joliet	59041	690-9329	<a href="mailto:sethberglee@gmail.com">sethberglee@gmail.com</a>
Elizabeth "Betsy" Scanlin	D	HD 58	P.O. Box 65	Red Lodge	59068	671-1124	<a href="mailto:bescanlin@msn.com">bescanlin@msn.com</a>
Marty Malone	R	HD 59	P.O. Box 152	Pray	59065	223-1302	<a href="mailto:maloneforhd59@gmail.com">maloneforhd59@gmail.com</a>
Dan Vermillion	D	HD 59	P.O. Box 668	Livingston	59047	222-0624	<a href="mailto:dan@sweetwatertravel.com">dan@sweetwatertravel.com</a>
Laurie Bishop	D	HD 60	211 S. Yellowstone St.	Livingston	59047	223-1122	<a href="mailto:bishopforhd60@gmail.com">bishopforhd60@gmail.com</a>
Joe Lamm	R	HD 60	P.O. Box 1390	Livingston	59047	224-1777	<a href="mailto:jlamm@nellus.com">jlamm@nellus.com</a>
Jim Hamilton	D	HD 61	P.O. Box 1768	Bozeman	59771	570-7517	<a href="mailto:Hamiltonformthouse@gmail.com">Hamiltonformthouse@gmail.com</a>
Ed Stafman	D	HD 62	515 W Cleveland St	Bozeman	59715	640-3362	<a href="mailto:edstafman@edstafmanformontana.com">edstafman@edstafmanformontana.com</a>
Francis Wendt	L	HD 62	15 Chinook Trail	Bozeman	59718	595-5111	<a href="mailto:francis.wendt@mtlp.org">francis.wendt@mtlp.org</a>
Alice Buckley	D	HD 63	107 S 10th Ave	Bozeman	59715	404-0891	<a href="mailto:aliceformontana@gmail.com">aliceformontana@gmail.com</a>
Bryan Donald Haysom	R	HD 63	200 Frank Rd #73	Belgrade	59714	581-4889	<a href="mailto:Bryan.Haysom@gmail.com">Bryan.Haysom@gmail.com</a>
Doug Campbell	L	HD 64	2210 Highland Ct	Bozeman	59715	Not Listed	<a href="mailto:info@dougformt.us">info@dougformt.us</a>
Jane Gillette	R	HD 64	P.O. Box 1751	Bozeman	59771	800-1427	<a href="mailto:Jane@DrJaneGillette.com">Jane@DrJaneGillette.com</a>
Brian Gabriel Popiel	D	HD 64	1411 S Rouse	Bozeman	59715	579-1362	<a href="mailto:brian.popiel.hd64@gmail.com">brian.popiel.hd64@gmail.com</a>
Jolene Crum	R	HD 65	940 Kodiak Place	Belgrade	59714	404-5465	<a href="mailto:joleneccrum@gmail.com">joleneccrum@gmail.com</a>
Kelly Kortum	D	HD 65	P.O. Box 942	Bozeman	59771	579-7531	<a href="mailto:kellyformt@gmail.com">kellyformt@gmail.com</a>
Denise Hayman	D	HD 66	P.O. Box 6115	Bozeman	59771	579-1986	<a href="mailto:scotthayman85@gmail.com">scotthayman85@gmail.com</a>
Colette K. Campbell	D	HD 67	180 Tower Rd	Belgrade	59714	599-0751	<a href="mailto:only1tigrress@gmail.com">only1tigrress@gmail.com</a>



Name	Party	District	Mailing Address	City	Zip	Phone	Email
Jedediah Hinkle	R	HD 67	1700 Drummond Blvd	Belgrade	59714	585-0722	<a href="mailto:hinkle66@gmail.com">hinkle66@gmail.com</a>
Andrew Schaefer	L	HD 67	2101 Strunella Ln	Belgrade	59714	813-1152	<a href="mailto:schaeferhd67@gmail.com">schaeferhd67@gmail.com</a>
Caleb Hinkle	R	HD 68	P.O. BOX 468	Belgrade	59714	529-7091	<a href="mailto:calebformontana@outlook.com">calebformontana@outlook.com</a>
Jennifer Carlson	R	HD 69	110 Flying Eagle Way	Manhattan	59741	282-7250	<a href="mailto:Jennifer@CarlsonForLiberty.com">Jennifer@CarlsonForLiberty.com</a>
Julie Dooling	R	HD 70	3855 Cedar Valley Rd	Helena	59602	471-4125	<a href="mailto:julie.dooling@mtleg.gov">julie.dooling@mtleg.gov</a>
Ian Root	D	HD 71	84 Cold Creek Loop Trail	Ennis	59729	682-3151	<a href="mailto:healdroot@wispwest.net">healdroot@wispwest.net</a>
Kenneth Walsh	R	HD 71	P.O. BOX 483	Twin Bridges	59754	596-0418	<a href="mailto:kwalsh@3rivers.net">kwalsh@3rivers.net</a>
Tom Welch	R	HD 72	607 Highland Avenue	Dillon	59725	683-4811	<a href="mailto:twelch1213@gmail.com">twelch1213@gmail.com</a>
Jim Keane	D	HD 73	2131 Wall St	Butte	59701	723-8378	Not Provided
Marjory McCaffery	R	HD 73	P. O. Box 3842	Butte	59702	510-304-0728	<a href="mailto:marji.mccaffery@hotmail.com">marji.mccaffery@hotmail.com</a>
Derek Harvey	D	HD 74	P.O. Box 3111	Butte	59701	490-5472	<a href="mailto:harvey4house@gmail.com">harvey4house@gmail.com</a>
Jim Kephart	R	HD 74	827 West Mercury	Butte	59701	593-0641	<a href="mailto:j_kephart@yahoo.com">j_kephart@yahoo.com</a>
Marta Bertoglio	R	HD 75	P.O. Box 294	Clancy	59634	438-1772	<a href="mailto:martaformontana@gmail.com">martaformontana@gmail.com</a>
Bryher Herak	D	HD 75	P.O. Box 5	Basin	59631	459-0955	<a href="mailto:bryherherak@gmail.com">bryherherak@gmail.com</a>
Donavon Hawk	D	HD 76	3474 Hannibal	Butte	59701	533-9125	<a href="mailto:hawk4house@gmail.com">hawk4house@gmail.com</a>
Andy Johnson	R	HD 76	3470 Quincy St	Butte	59701	498-8628	<a href="mailto:eandyj007@gmail.com">eandyj007@gmail.com</a>
Heather Blom	R	HD 77	2120 S. Reserve St PMB # 455	Missoula	59801	544-5017	<a href="mailto:Hblom77@gmail.com">Hblom77@gmail.com</a>
Sara Novak	D	HD 77	2136 N. Cable Rd	Anaconda	59711	691-0069	<a href="mailto:novak4hd77@gmail.com">novak4hd77@gmail.com</a>
Gregory Frazer	R	HD 78	210 4th St	Deer Lodge	59722	Not Listed	<a href="mailto:gregoryfrazer.hd78@gmail.com">gregoryfrazer.hd78@gmail.com</a>
Cindy Hiner	D	HD 78	1027 Kentucky St	Deer Lodge	59722	691-0043	<a href="mailto:Matthiner@hotmail.com">Matthiner@hotmail.com</a>
Rob Farris-Olsen	D	HD 79	P.O. Box 418	Helena	59624	794-4780	<a href="mailto:robformontana@gmail.com">robformontana@gmail.com</a>
Dennison J Rivera	R	HD 79	685 Legend Loop, F112	Helena	59602	439-8129	<a href="mailto:dennison_joel@msn.com">dennison_joel@msn.com</a>
Becky Beard	R	HD 80	23920 US HWY 12 E	Elliston	59728	492-6590	<a href="mailto:becky4hd80@blackfoot.net">becky4hd80@blackfoot.net</a>
Ron Vandevender	L	HD 80	3723 Eagle Canyon Rd	Cascade	59421	422-3474	<a href="mailto:ron@ronformontana.com">ron@ronformontana.com</a>
Mary Caferro	D	HD 81	P.O. Box 688	Helena	59624	461-2384	<a href="mailto:marycaferro@gmail.com">marycaferro@gmail.com</a>
Bob Leach	R	HD 81	P.O. Box 1253	East Helena	59635	227-5113	<a href="mailto:rlleach@peoplepc.com">rlleach@peoplepc.com</a>
Moffie Funk	D	HD 82	P.O. Box 925	Helena	59624	461-6785	<a href="mailto:funkformontana@gmail.com">funkformontana@gmail.com</a>
Debbie Westlake	R	HD 82	1107 Logan St	Helena	59601	422-6111	<a href="mailto:westlake4mt@gmail.com">westlake4mt@gmail.com</a>
Kim Abbott	D	HD 83	P.O. Box 1752	Helena	59624	439-8721	<a href="mailto:kim.k.abbott@gmail.com">kim.k.abbott@gmail.com</a>

Name	Party	District	Mailing Address	City	Zip	Phone	Email
Darin L. Gaub	R	HD 83	524 8th Avenue	Helena	59601	579-0178	<a href="mailto:daringaub73@gmail.com">daringaub73@gmail.com</a>
<i>Mary Ann Dunwell</i>	D	HD 84	2811 Alexis Ave	Helena	59601	461-5358	<a href="mailto:dunwellforhd84@gmail.com">dunwellforhd84@gmail.com</a>
Charlie Hull	R	HD 84	P.O. Box 99	East Helena	59635	594-8321	<a href="mailto:ausstex@yahoo.com">ausstex@yahoo.com</a>
Michele Binkley	R	HD 85	P.O. Box 1601	Hamilton	59840	375-0291	<a href="mailto:michele@binkleyformontana.com">michele@binkleyformontana.com</a>
Laura Jackson	D	HD 85	394 Lost Horse Rd	Hamilton	59840	363-4198	<a href="mailto:lauraforhd85@gmail.com">lauraforhd85@gmail.com</a>
<i>David Bedey</i>	R	HD 86	P.O. Box 692	Hamilton	59840	381-2059	<a href="mailto:d.f.bedey@gmail.com">d.f.bedey@gmail.com</a>
Ron Marshall	R	HD 87	840 S 1st St	Hamilton	59840	579-9498	<a href="mailto:ronmarshallmt87@gmail.com">ronmarshallmt87@gmail.com</a>
Laura Merrill	D	HD 87	P.O. Box 718	Stevensville	59870	381-0067	<a href="mailto:Merrill4montana@gmail.com">Merrill4montana@gmail.com</a>
<i>Sharon Greef</i>	R	HD 88	P.O. Box 1327	Florence	59833	370-0580	<a href="mailto:Sharon.greef@mtleg.gov">Sharon.greef@mtleg.gov</a>
<i>Katie Sullivan</i>	D	HD 89	P.O. Box 7853	Missoula	59807	616-3914	<a href="mailto:sullivanhd89@gmail.com">sullivanhd89@gmail.com</a>
Gary Wanberg	R	HD 89	P.O. Box 16402	Missoula	59808	542-1484	<a href="mailto:garywanberg@usa.com">garywanberg@usa.com</a>
Lana Hamilton	R	HD 90	P.O. Box 848	Missoula	59806	Not Listed	Not Provided
<i>Marilyn Marler</i>	D	HD 90	1750 S. 8th St. W.	Missoula	59801	544-7189	<a href="mailto:marilynmarler@gmail.com">marilynmarler@gmail.com</a>
<i>Connie Keogh</i>	D	HD 91	P.O. Box 7542	Missoula	59807	298-0985	<a href="mailto:keoghforHD91@gmail.com">keoghforHD91@gmail.com</a>
Bethanie Calvert Wanberg	R	HD 91	P.O. Box 16402	Missoula	59808	370-1188	<a href="mailto:bcwanberg@gmail.com">bcwanberg@gmail.com</a>
Tom Browder	D	HD 92	P.O. Box 141	Seeley Lake	59868	303-0770	<a href="mailto:browderforhd92@gmail.com">browderforhd92@gmail.com</a>
<i>Mike Hopkins</i>	R	HD 92	P.O. Box 848	Missoula	59806	531-1775	<a href="mailto:Mikeformontana@gmail.com">Mikeformontana@gmail.com</a>
Lisa Pavlock	D	HD 93	62551 Wild Rose Lane	St. Ignatius	59865	493-5192	<a href="mailto:lisafor93@gmail.com">lisafor93@gmail.com</a>
<i>Joe Read</i>	R	HD 93	35566 Terrace Lk Rd Bldg 3	Ronan	59864	253-1130	<a href="mailto:readconstitution@gmail.com">readconstitution@gmail.com</a>
Kelsey Cooley	R	HD 94	P.O. Box 9135	Missoula	59807	210-8591	<a href="mailto:kelsey@cooleyformontana.com">kelsey@cooleyformontana.com</a>
Tom France	D	HD 94	5900 Thornbird Lane	Missoula	59808	396-5085	<a href="mailto:thomasmfrance@gmail.com">thomasmfrance@gmail.com</a>
Rebecca Dawson	R	HD 95	3802 Lexington Ave	Missoula	59808	880-9866	<a href="mailto:beccadawson1@gmail.com">beccadawson1@gmail.com</a>
Danny Tenenbaum	D	HD 95	P.O. Box 8612	Missoula	59807	285-1460	<a href="mailto:drtenenbaum@gmail.com">drtenenbaum@gmail.com</a>
Loni Conley	D	HD 96	14490 Harpers Bridge Rd	Missoula	59808	471-1985	<a href="mailto:loniconley2020@gmail.com">loniconley2020@gmail.com</a>
Kathy Whitman	R	HD 96	P.O. Box 16323	Missoula	59808	207-4709	<a href="mailto:whitmanforhd96@gmail.com">whitmanforhd96@gmail.com</a>
LouAnn Hansen	D	HD 97	223 Red Fox Rd	Lolo	59847	360-2885	<a href="mailto:lahansen223@gmail.com">lahansen223@gmail.com</a>
<i>Brad Tschida</i>	R	HD 97	10825 Mullan Rd	Missoula	59808	546-4349	<a href="mailto:brad@tschida.org">brad@tschida.org</a>
Richard Armerding	L	HD 98	3317 S. 7th St. W., Unit 10	Missoula	59804	317-1318	<a href="mailto:richard.armerding@gmail.com">richard.armerding@gmail.com</a>
Nancy Burgoyne	R	HD 98	8625 Jacot Lane	Missoula	59808	206-618-6822	<a href="mailto:nburgoyne@gmail.com">nburgoyne@gmail.com</a>

Name	Party	District	Mailing Address	City	Zip	Phone	Email
<i>Willis Curdy</i>	D	HD 98	11280 Kona Ranch Rd	Missoula	59804	728-0981	<a href="mailto:wcurdy@bridgemail.com">wcurdy@bridgemail.com</a>
David "Doc" Moore	R	HD 99	3919 Paxson St	Missoula	59801	239-3499	<a href="mailto:mooreforHD99@gmail.com">mooreforHD99@gmail.com</a>
Mark Thane	D	HD 99	P.O. BOX 692	Missoula	59806	552-3957	<a href="mailto:ThaneHD99@gmail.com">ThaneHD99@gmail.com</a>
Carol Minjares	R	HD 100	6460 Mullan Rd	Missoula	59808	239-1628	<a href="mailto:caroljm36@msn.com">caroljm36@msn.com</a>
<i>Andrea Olsen</i>	D	HD 100	622 Rollins	Missoula	59801	543-2666	<a href="mailto:AndreaOlsenHD100@gmail.com">AndreaOlsenHD100@gmail.com</a>

## Montana Senate

Name	Party	District	Mailing Address	City	Zip	Phone	Email
<i>Mike Cuffe</i>	R	SD 01	P.O. Box 1685	Eureka	59917	293-1247	<a href="mailto:mcuffe@interbel.net">mcuffe@interbel.net</a>
Carl Glimm	R	SD 02	P.O. Box 976	Columbia Falls	59912	751-7334	<a href="mailto:carl.glimm@mtleg.gov">carl.glimm@mtleg.gov</a>
Kyle Waterman	D	SD 02	P.O. Box 1386	Columbia Falls	59912	871-4885	<a href="mailto:kyle4flathead@gmail.com">kyle4flathead@gmail.com</a>
Guthrie Quist	D	SD 03	P.O. Box 2026	Whitefish	59937	471-4439	<a href="mailto:quistformontana@gmail.com">quistformontana@gmail.com</a>
<i>Keith Regier</i>	R	SD 03	1078 Stillwater Rd	Kalispell	59901	756-6141	<a href="mailto:keithregier@gmail.com">keithregier@gmail.com</a>
<i>Mark Blasdel</i>	R	SD 04	P.O. Box 1493	Kalispell	59903	261-3269	<a href="mailto:mblasdel@bresnan.net">mblasdel@bresnan.net</a>
<i>Bob Keenan</i>	R	SD 05	P.O. Box 697	Bigfork	59911	250-4111	<a href="mailto:bob@bobkeenan.us">bob@bobkeenan.us</a>
Greg Hertz	R	SD 06	P.O. Box 1747	Polson	59860	253-9505	<a href="mailto:greghertz11@gmail.com">greghertz11@gmail.com</a>
Bob Brown	R	SD 07	Po Box1907	Thompson Falls	59873	242-0141	<a href="mailto:fajitabob2014@yahoo.com">fajitabob2014@yahoo.com</a>
Diane Magone	D	SD 07	156 Trout Creek Rd	Superior	59872	529-3576	<a href="mailto:diane_magone@hotmail.com">diane_magone@hotmail.com</a>
<i>Susan Webber</i>	D	SD 08	P.O. Box 1011	Browning	59417	338-2159	<a href="mailto:nitzitap@3rivers.net">nitzitap@3rivers.net</a>
<i>Butch Gillespie</i>	R	SD 09	Box 180	Kevin	59454	339-2943	<a href="mailto:mtranch@northerntel.net">mtranch@northerntel.net</a>
<i>Steve Fitzpatrick</i>	R	SD 10	P.O. Box 7192	Great Falls	59406	750-6764	<a href="mailto:fitzpatrick@bresnan.net">fitzpatrick@bresnan.net</a>
<i>Tom Jacobson</i>	D	SD 11	521 Riverview Dr E	Great Falls	59404	868-9814	<a href="mailto:tomjacobsonmt@gmail.com">tomjacobsonmt@gmail.com</a>
<i>Carlie Boland</i>	D	SD 12	1215 6th Ave N	Great Falls	59401	868-1029	<a href="mailto:ccboland35@gmail.com">ccboland35@gmail.com</a>
<i>Brian Hoven</i>	R	SD 13	1501 Meadowlark Dr	Great Falls	59404	761-8533	<a href="mailto:brian@hovenequipment.com">brian@hovenequipment.com</a>
<i>Russ Tempel</i>	R	SD 14	Box 131	Chester	59522	496-265-0990	<a href="mailto:russtempel@gmail.com">russtempel@gmail.com</a>
<i>Ryan Osmundson</i>	R	SD 15	1394 S Buffalo Canyon Rd	Buffalo	59418	Not Listed	<a href="mailto:ryanosmundson@gmail.com">ryanosmundson@gmail.com</a>
Mike Fox	D	SD 16	233 Fox Dr	Hays	59527	399-0479	<a href="mailto:fbbuffalo@yahoo.com">fbbuffalo@yahoo.com</a>
<i>Mike Lang</i>	R	SD 17	P.O. Box 104	Malta	59538	654-1117	<a href="mailto:nasml@itstriangle.com">nasml@itstriangle.com</a>
<i>Steve Hinebauch</i>	R	SD 18	610 Rd 118	Wibaux	59353	365-7967	<a href="mailto:stevehinebauch@miDrrs.com">stevehinebauch@miDrrs.com</a>

Name	Party	District	Mailing Address	City	Zip	Phone	Email
Pat Mischel	D	SD 18	47 Rd 261	Glendive	59330	377-6690	<a href="mailto:pmischel@miDrrs.com">pmischel@miDrrs.com</a>
<i>Kenneth Bogner</i>	R	SD 19	1017 Pleasant St	Miles City	59301	916-9690	<a href="mailto:kennethbogner@gmail.com">kennethbogner@gmail.com</a>
<i>Duane Ankney</i>	R	SD 20	P.O. Box 2138	Colstrip	59323	740-0629	<a href="mailto:goodwind1.duane@gmail.com">goodwind1.duane@gmail.com</a>
Rae Peppers	D	SD 21	P.O. Box 497	Lame Deer	59043	697-0565	<a href="mailto:badger497@gmail.com">badger497@gmail.com</a>
<i>Jason Small</i>	R	SD 21	HC 42 BOX 674	Busby	59016	690-0923	<a href="mailto:j2thedsmall@gmail.com">j2thedsmall@gmail.com</a>
<i>Doug Kary</i>	R	SD 22	415 W. Wicks Ln	Billings	59105	698-1478	<a href="mailto:dougekary@yahoo.com">dougekary@yahoo.com</a>
Tom McGillvray	R	SD 23	3642 Donna Dr	Billings	59102	Not Listed	<a href="mailto:tmcgilvray@bresnan.net">tmcgilvray@bresnan.net</a>
<i>Mary McNally</i>	D	SD 24	P.O. Box 20584	Billings	59104	671-1376	<a href="mailto:mary.mcnelly@mtleg.gov">mary.mcnelly@mtleg.gov</a>
<i>Jen Gross</i>	D	SD 25	P.O. BOX 30472	Billings	59101	696-0649	<a href="mailto:friendsofjengross2020@gmail.com">friendsofjengross2020@gmail.com</a>
Scott Price	R	SD 25	2369 Westfield Dr	Billings	59106	698-2727	<a href="mailto:sprice2369@gmail.com">sprice2369@gmail.com</a>
<i>Margie MacDonald</i>	D	SD 26	P.O. Box 245	Billings	59103	652-6625	<a href="mailto:macmargaret@gmail.com">macmargaret@gmail.com</a>
Chris Friedel	R	SD 26	3302 2nd Ave. N	Billings	59101	272-2245	<a href="mailto:chris@chrisfriedel.com">chris@chrisfriedel.com</a>
<i>Cary Smith</i>	R	SD 27	6133 Timbercove Dr	Billings	59106	698-9307	<a href="mailto:cary.smith@mtleg.gov">cary.smith@mtleg.gov</a>
Brad Molnar	R	SD 28	P.O. BOX 517	Laurel	59044	794-5982	<a href="mailto:brad.molnar@yahoo.com">brad.molnar@yahoo.com</a>
<i>David Howard</i>	R	SD 29	P.O. Box 10	Park City	59063	633-2762	<a href="mailto:d.howard@usadig.com">d.howard@usadig.com</a>
<i>John Esp</i>	R	SD 30	P.O. Box 1024	Big Timber	59011	932-5662	<a href="mailto:jesp@mtintouch.net">jesp@mtintouch.net</a>
Joshua-Luke O'Connor	L	SD 31	204 S Yellowstone Ave, Apt 3	Bozeman	59718	407-0358	<a href="mailto:jlkoc92@gmail.com">jlkoc92@gmail.com</a>
Christopher Pope	D	SD 31	1508 S. Willson Ave	Bozeman	59715	581-8739	<a href="mailto:PopeForMontana@gmail.com">PopeForMontana@gmail.com</a>
Rick Vaught	R	SD 31	712 N. Montana	Bozeman	59715	579-9779	<a href="mailto:rickvght@yahoo.com">rickvght@yahoo.com</a>
<i>Pat Flowers</i>	D	SD 32	P.O. Box 1047	Belgrade	59714	580-0035	<a href="mailto:patflowersformontana@gmail.com">patflowersformontana@gmail.com</a>
JP Pomnichowski	D	SD 33	222 Westridge Dr	Bozeman	59715	587-7846	<a href="mailto:pomnicho@gmail.com">pomnicho@gmail.com</a>
<i>Gordy Vance</i>	R	SD 34	P.O. Box 1	Belgrade	59714	589-7164	<a href="mailto:vancesd34@gmail.com">vancesd34@gmail.com</a>
Walt Sales	R	SD 35	3900 Stagecoach Trail	Manhattan	59741	570-2128	<a href="mailto:waltsales4montana@gmail.com">waltsales4montana@gmail.com</a>
<i>Jeff Welborn</i>	R	SD 36	Box 790	Dillon	59725	949-6070	<a href="mailto:Jeff.welborn@mtleg.gov">Jeff.welborn@mtleg.gov</a>
John Lamb	L	SD 36	1627 W Main St # 101	Bozeman	59715	548-1622	<a href="mailto:lambbo72@gmail.com">lambbo72@gmail.com</a>
Ryan Lynch	D	SD 37	P. O. Box 934	Butte	59703	498-6625	<a href="mailto:lynchryan@gmail.com">lynchryan@gmail.com</a>
Aaron Meaders	R	SD 37	532 S Clark St	Butte	59701	498-4160	<a href="mailto:meaders4sd37@gmail.com">meaders4sd37@gmail.com</a>
Jim Buterbaugh	R	SD 38	P.O. Box 83	Whitehall	59759	491-6995	<a href="mailto:kmjkbaugh@gmail.com">kmjkbaugh@gmail.com</a>
<i>Eddie McClafferty</i>	D	SD 38	1311 Stuart	Butte	59701	490-5873	<a href="mailto:edie.mcclafferty@gmail.com">edie.mcclafferty@gmail.com</a>

Name	Party	District	Mailing Address	City	Zip	Phone	Email
Suzzann Nordwick	R	SD 39	P.O. Box 711	Butte	59703	782-5310	<a href="mailto:suzzann@nordwick.com">suzzann@nordwick.com</a>
Mark Sweeney	D	SD 39	337 Beta St	Philipsburg	59858	560-0171	<a href="mailto:masween@hotmail.com">masween@hotmail.com</a>
<i>Terry Gauthier</i>	R	SD 40	P.O. BOX 4939	Helena	59604	461-0744	<a href="mailto:mrmac570@me.com">mrmac570@me.com</a>
Catherine Scott	D	SD 40	P.O. Box 5631	Helena	59604	505-269-9829	<a href="mailto:scottcatherine1@yahoo.com">scottcatherine1@yahoo.com</a>
<i>Janet Ellis</i>	D	SD 41	P.O. Box 385	Helena	59624	431-9157	<a href="mailto:janetellis4mt@gmail.com">janetellis4mt@gmail.com</a>
<i>Jill Cohenour</i>	D	SD 42	P.O. Box 1889	East Helena	59635	431-0912	<a href="mailto:jillcohenour@gmail.com">jillcohenour@gmail.com</a>
<i>Jason Ellsworth</i>	R	SD 43	1073 Golf Course Rd	Hamilton	59840	360-0009	<a href="mailto:jason@jasonformontana.com">jason@jasonformontana.com</a>
Margaret Gorski	D	SD 44	1287 Wheelbarrow Creek Rd	Stevensville	59870	777-2321	<a href="mailto:margaretgorskiforsd44@gmail.com">margaretgorskiforsd44@gmail.com</a>
Theresa Manzella	R	SD 44	640 Gold Creek Loop	Hamilton	59840	546-9462	<a href="mailto:theresa@manzellaformontana.com">theresa@manzellaformontana.com</a>
Ellie Hill	D	SD 45	501 Daly Avenue	Missoula	59801	218-9608	<a href="mailto:EllieHillSmith@gmail.com">EllieHillSmith@gmail.com</a>
Nolen Skime	L	SD 45	1250 34st G102	Missoula	59801	241-8356	<a href="mailto:skime.nolen@gmail.com">skime.nolen@gmail.com</a>
Mike Warner	R	SD 45	5432 Excalibur Way	Lolo	59847	241-8251	<a href="mailto:Mike_Warner1353@hotmail.com">Mike_Warner1353@hotmail.com</a>
Shannon O'Brien	D	SD 46	1480 Clarkia Lane	Missoula	59802	274-3805	<a href="mailto:shannonformontana@gmail.com">shannonformontana@gmail.com</a>
Niki Sardot	R	SD 46	P.O. Box 1074	Florence	59833	239-6856	Not Provided
Devin Braaten	L	SD 47	34164 Mud Lake Trail	Polson	59860	300-2904	<a href="mailto:Devin.J.Braaten@Gmail.com">Devin.J.Braaten@Gmail.com</a>
Chase Porter Gay	D	SD 47	P.O. Box 231	Frenchtown	59834	239-2252	<a href="mailto:chaseformontana@gmail.com">chaseformontana@gmail.com</a>
Gary Marbut	G	SD 47	P.O. Box 16106	Missoula	59808	549-1252	<a href="mailto:gary@marbut.com">gary@marbut.com</a>
<i>Dan Salomon</i>	R	SD 47	42470 Salomon Rd	Ronan	59864	253-9724	<a href="mailto:dan.salomon@mtleg.gov">dan.salomon@mtleg.gov</a>
<i>Nate McConnell</i>	D	SD 48	P.O. Box 8511	Missoula	59807	214-2445	<a href="mailto:nateforhd89@gmail.com">nateforhd89@gmail.com</a>
<i>Diane Sands</i>	D	SD 49	4487 Nicole Court	Missoula	59803	251-2001	<a href="mailto:senatorsands@gmail.com">senatorsands@gmail.com</a>
<i>Bryce Bennett</i>	D	SD 50	P.O. Box 9062	Missoula	59807	546-3629	<a href="mailto:bennettformontana@gmail.com">bennettformontana@gmail.com</a>